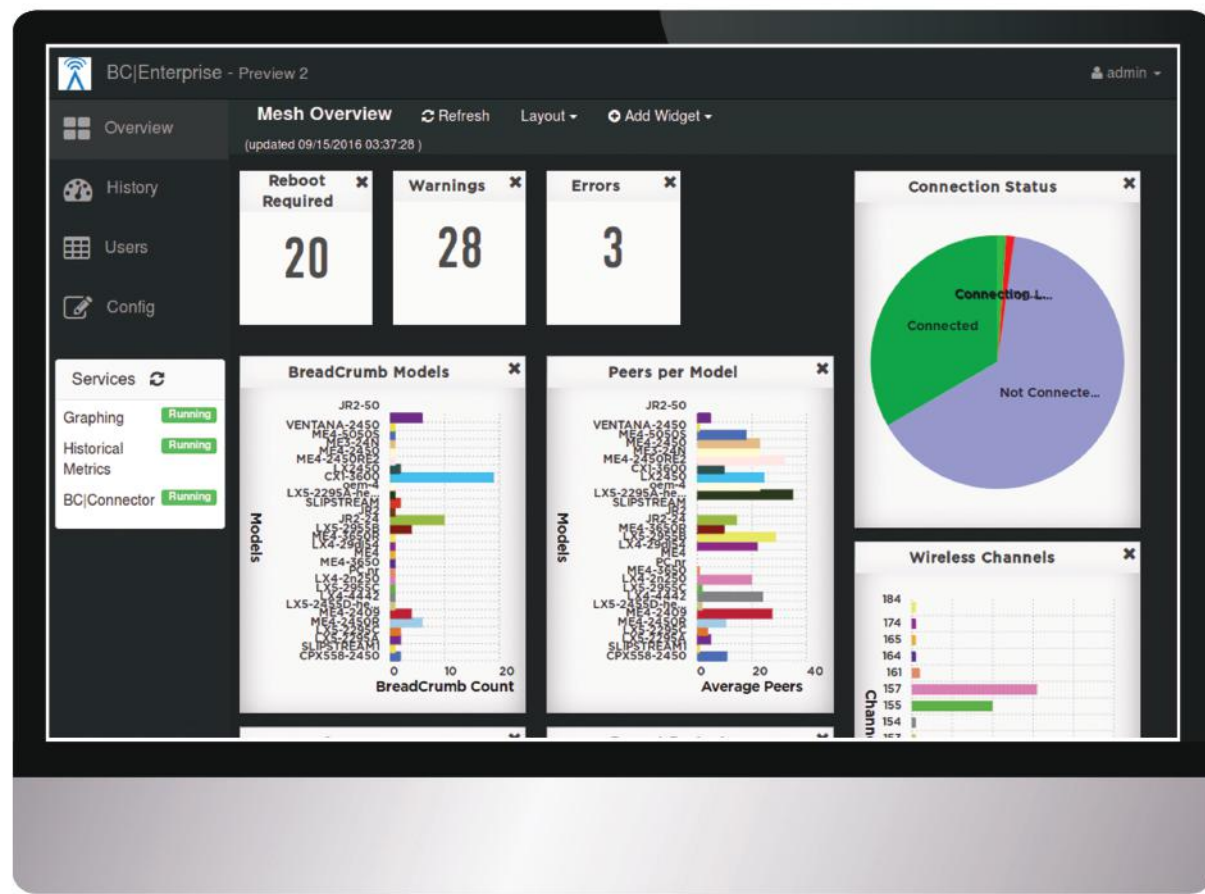


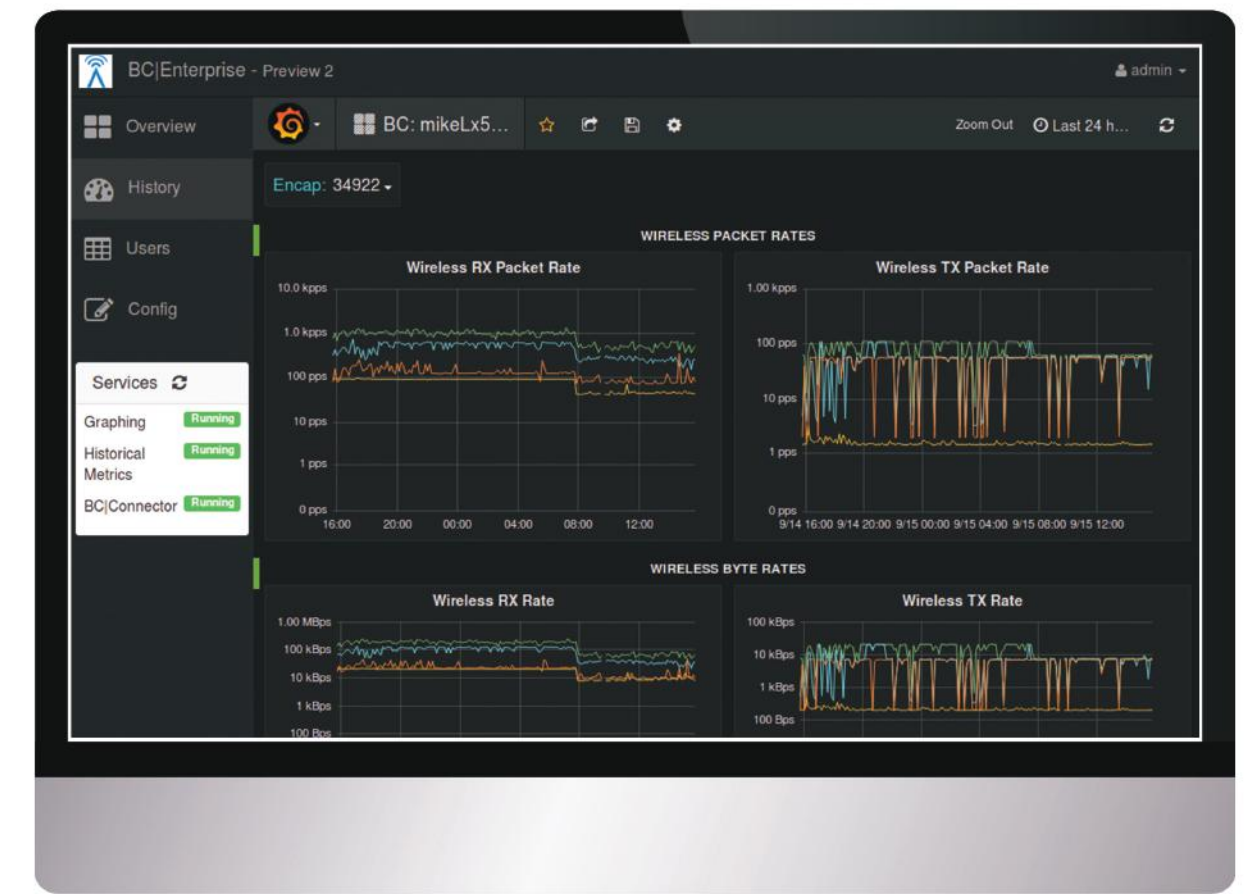
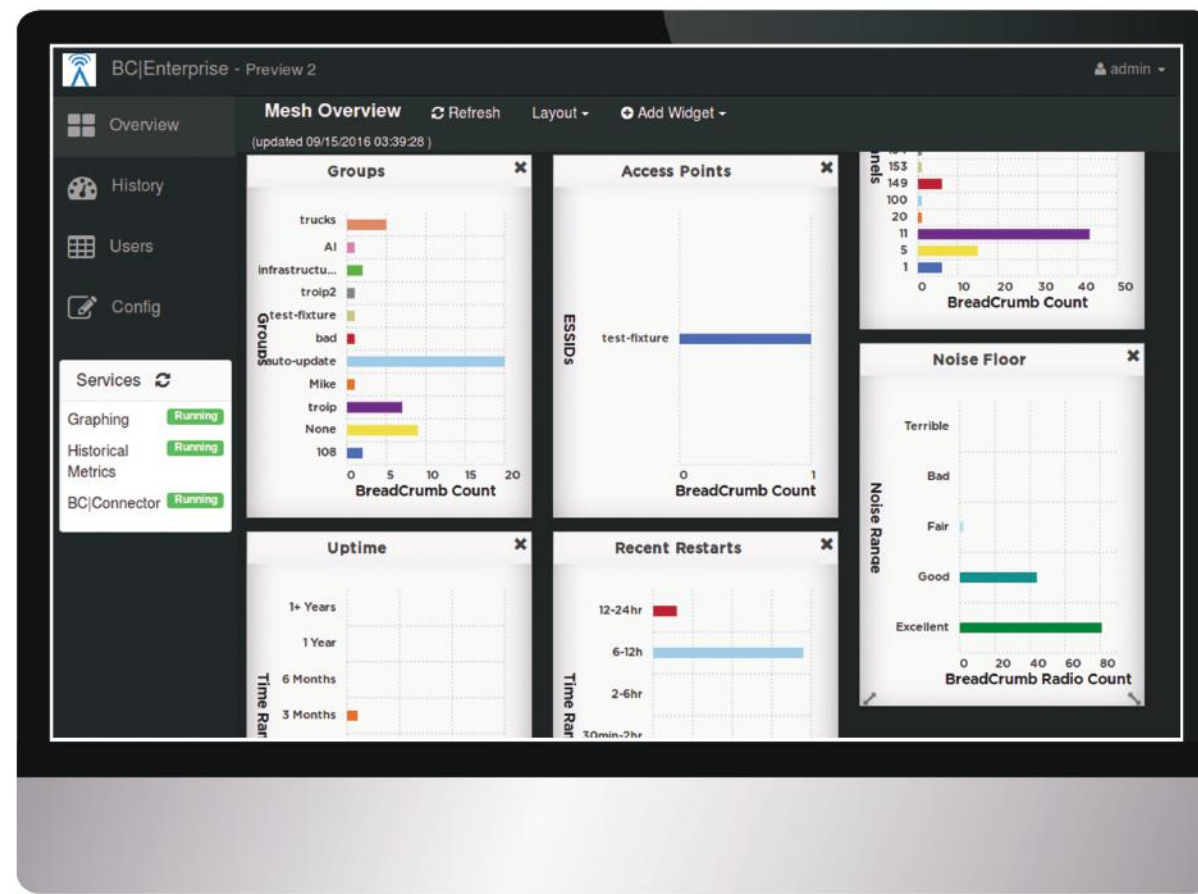
See the Past and Present...

Prepare for the Future of Your Kinetic Mesh® Network with BCIEnterprise

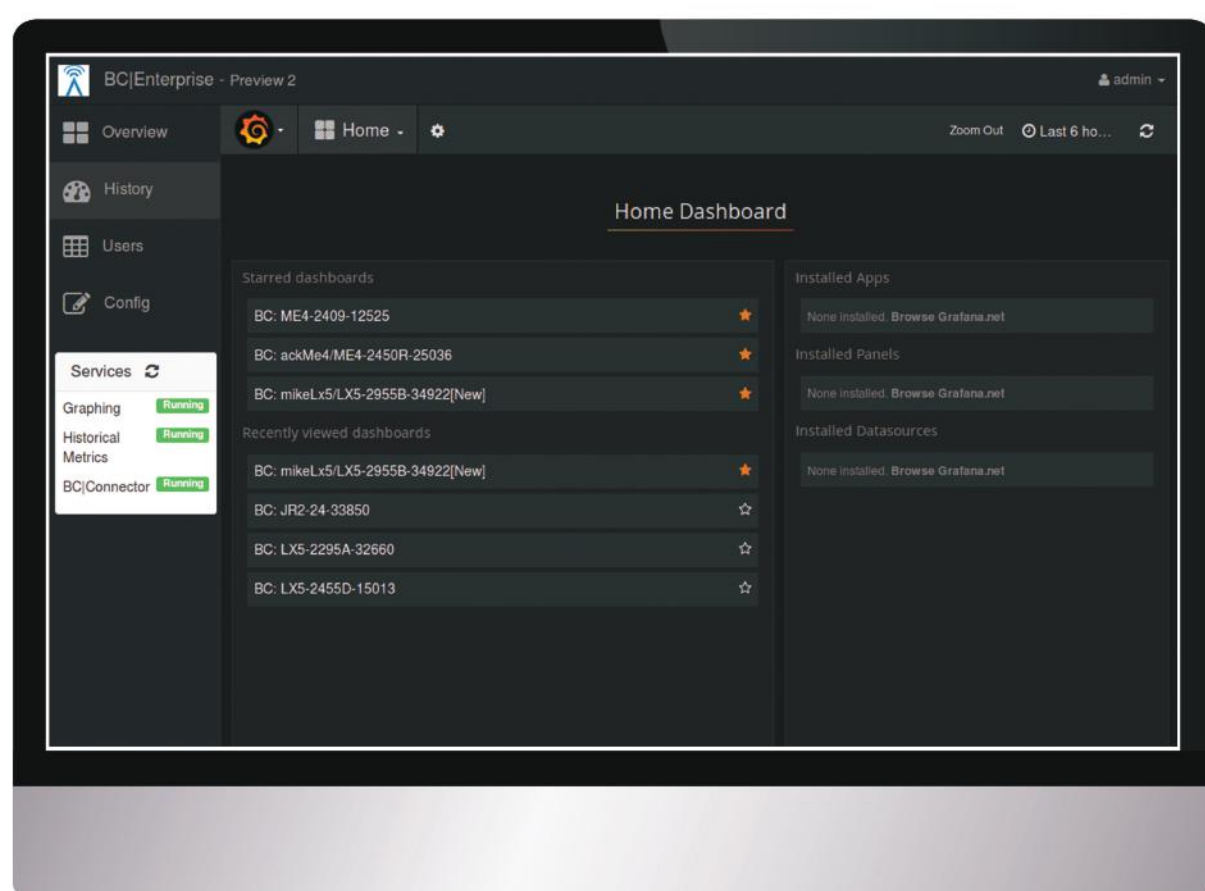


BCIEnterprise Overview Graphs

Landing page after login. Sidebar menu shows Overview, History, Users, Config and Services. Flexible chart arrangement. Drill down for each stat, bar or pie chart to full BreadCrumb® detail.

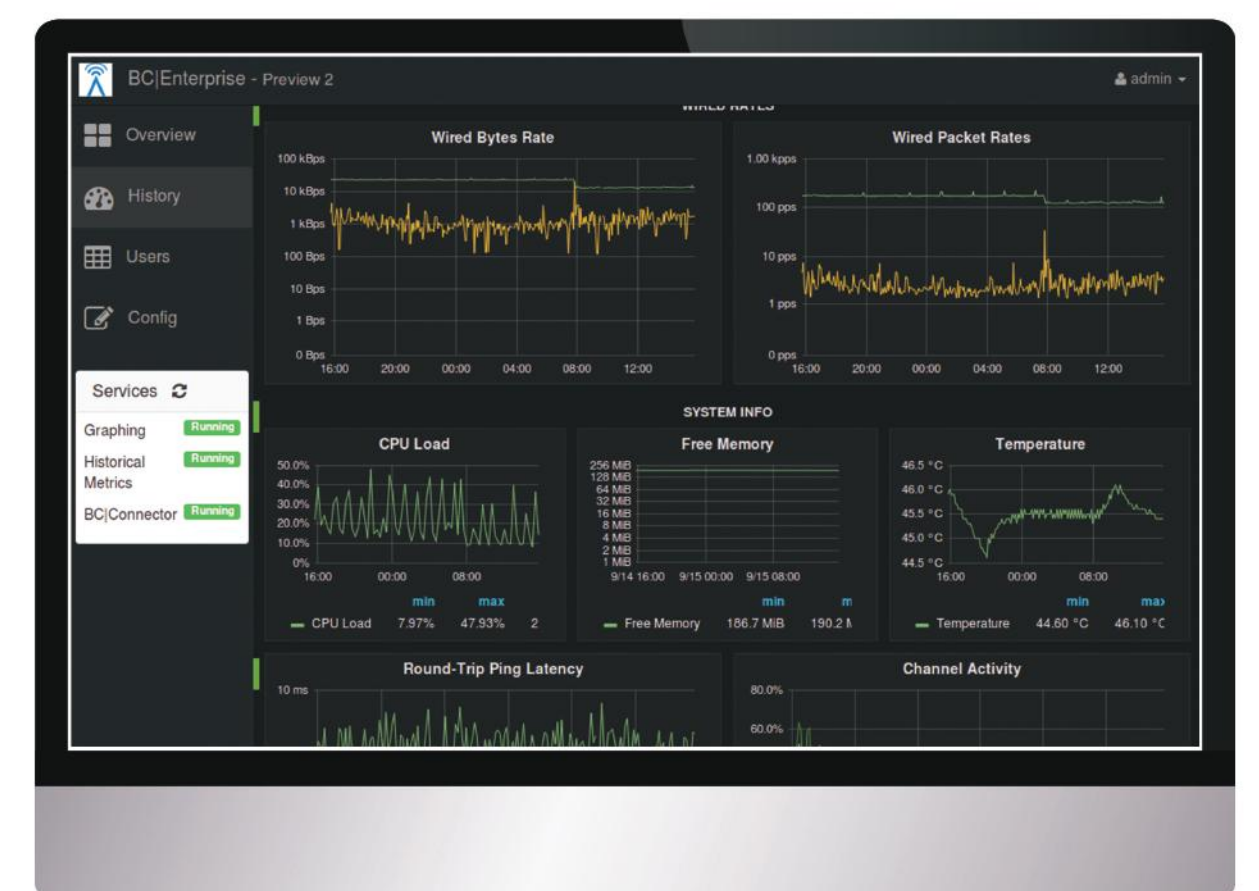
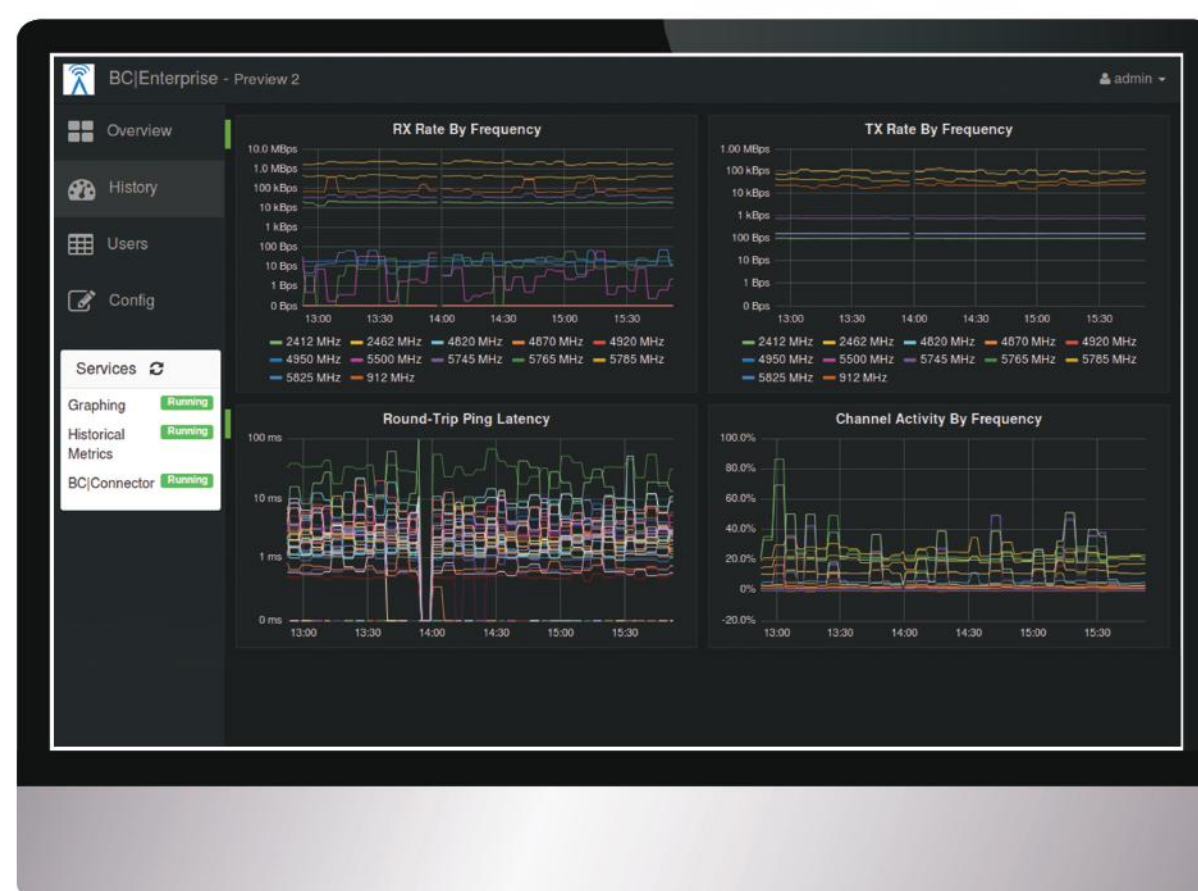


BreadCrumb dashboard screen displaying received and transmitted packet rates over designated time period.

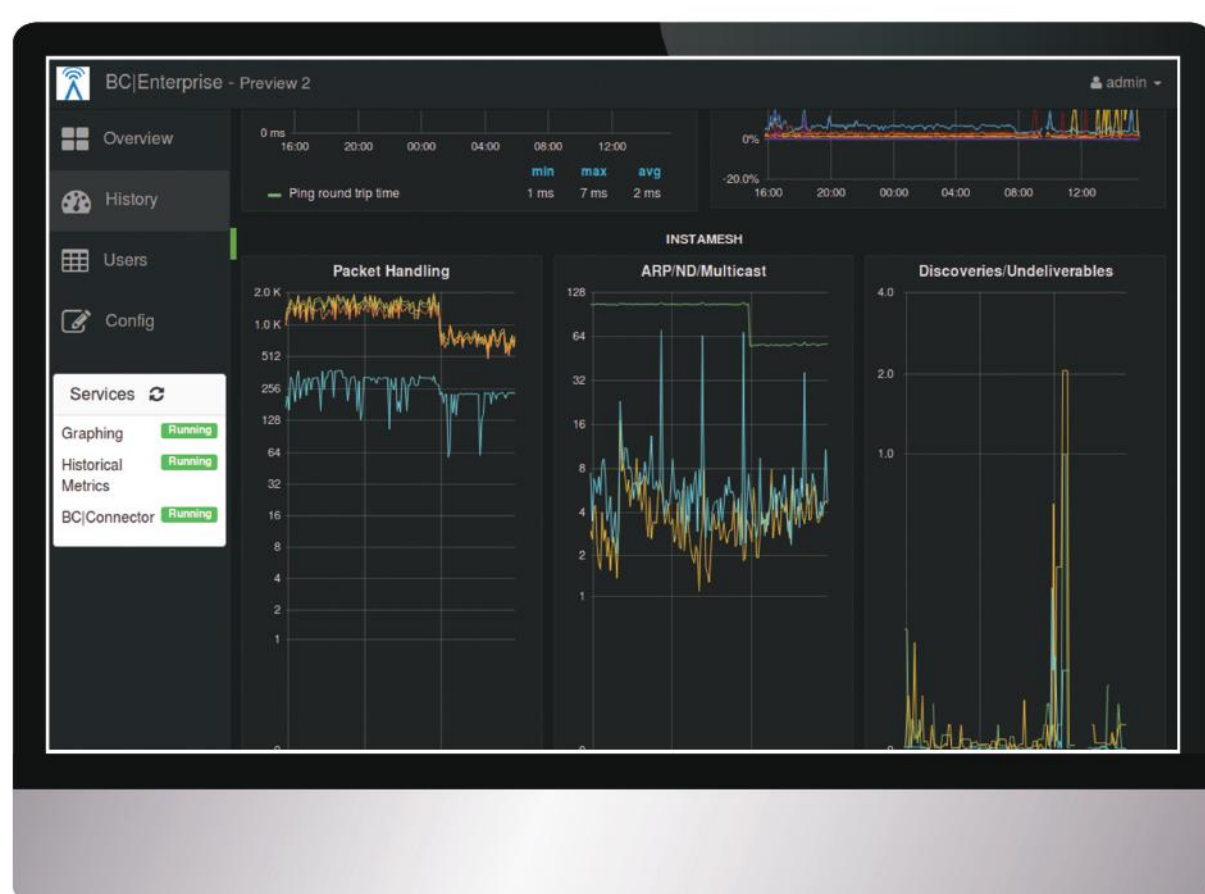


BCIEnterprise Multiple Dashboard Views

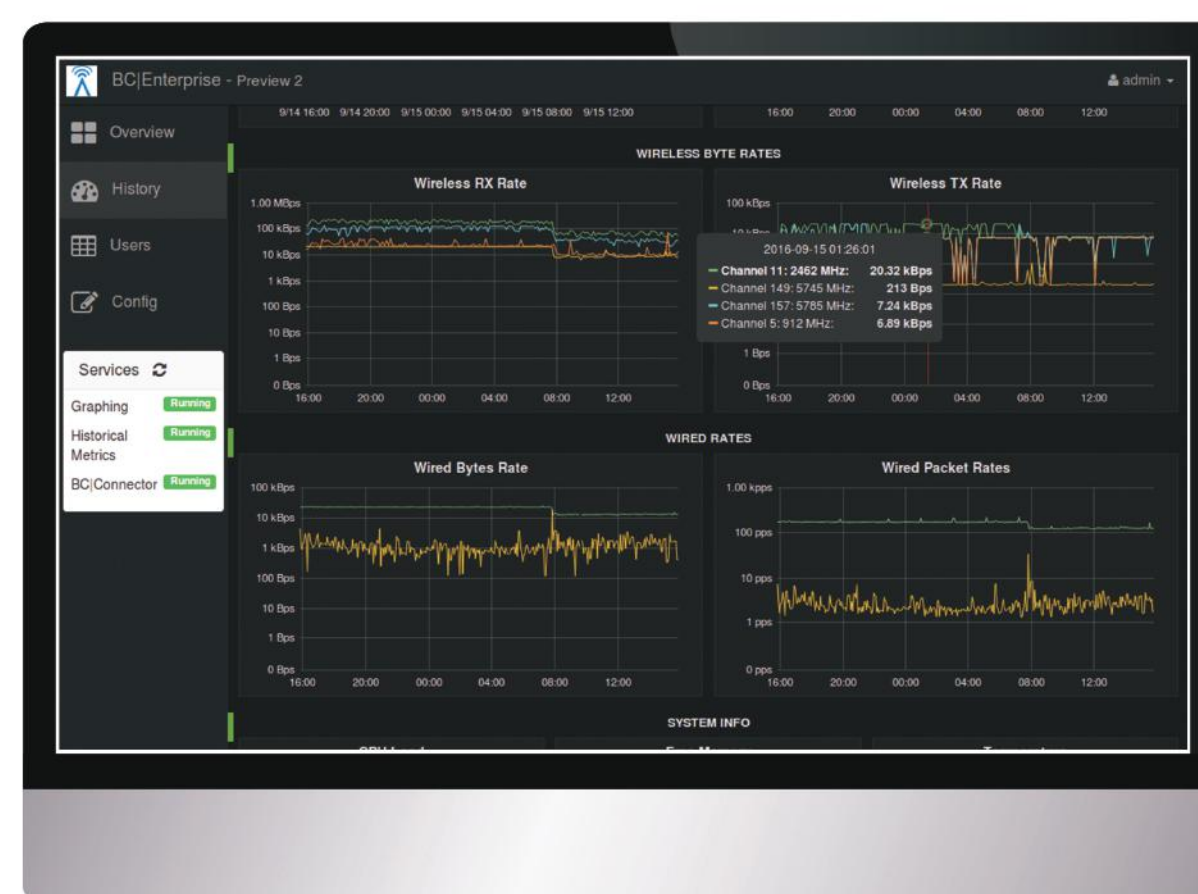
Graphs can consist of a single BreadCrumb, a designated Group or the entire mesh; dashboards are automatically generated every 5 minutes unless modified otherwise.



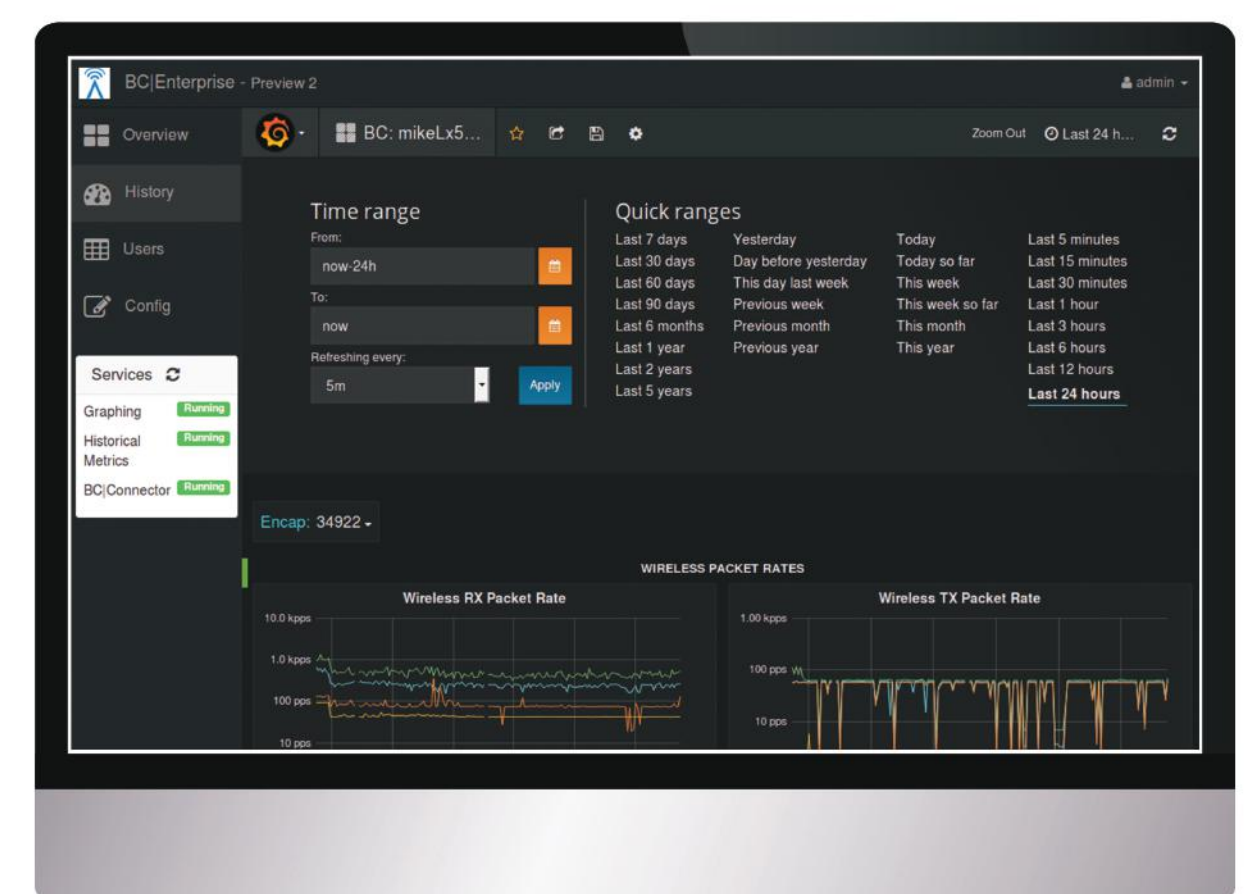
Important network data to include CPU Load, Free Memory, Temperature, Round-Trip Ping Latency and Channel Activity.



Important network data to include InstaMesh® stats, Packet Handling, ARP/ND Multicast, Discoveries/Undeliverables.



Values for a specific point in time are displayed when hovering the mouse over chart area.



Click icon allows users to modify dashboard time ranges which otherwise defaults to 24 hours.