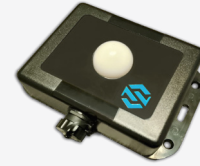


sky.Lux Outdoor Luminosity Sensor

sky.LUX device detects the level of luminosity of the environment and sends it via MQTT to the server. The information is processed through the configured parameters and triggers a command to the Wi-Fi lamp to perform adjustments to reach the pre-set lighting level.

IoT SENSORS



Product Features	
Product Code	50.100001.025
Processor	Tensilica LX6 dual core processor
SRAM	520 KB
Wi-Fi & BLE Antenna	Integrated
Wi-Fi Protocol	802.11 b/g/n/d/e/l/k/r
Wi-Fi Standard	FCC/CE/TELEC/KCC
Wi-Fi Frequency range	2.4GHz - 2.5GHz
Ports	1 x temperature control 1 x luminosity sensor control 1 x PIR control 3 x buttons control 1 x display control 1 x pressure & humidity control 4 x dimming control 1 x RGBW
Photoresistor	LDR GL5516 5kΩ - 0,5MΩ
Bluetooth Protocol	Comply with BR/EDR/BLE standard of Bluetooth v4.2
Power Input	12V
Power Consumption	1W
Operating Temperature	-40°C ~ 85°C
Size and weight	88x50x20mm - 20gr
Warranty	1 year

