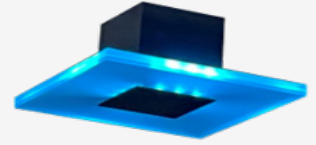


# sMir

## Ceiling Emotional IoT Assistant

### IoT DEVICES

Ceiling-mounted device equipped, with RGB led and designed to give environmental information, such as meeting rooms occupancy, temperature, humidity, etc, referred to a circumscribed area. Through BLE, sMir advertises area's ID, receiving back messages about the configured environmental parameters.



sMir is seamlessly integrated into the mesh and operates as gateway, publishing messages to MQTT.

The device shows – in traffic-light mode – an area status such as occupancy, environmental parameters or calendar events. For example, if the number of people within a room/area reaches or exceeds the maximum number of people allowed in (configurable for each room), or the temperature is above or below a configurable threshold, or the meeting room is booked/in use, the device placed in the ceiling changes light color as configured.

| Product Features              |  |
|-------------------------------|--|
| <b>Product Code</b>           | 50.100004.005  |
| <b>User Interface</b>         | LED  |
| <b>Power Supply</b>           | 230V   |
| <b>Power Supply Frequency</b> | 50/60 Hz   |
| <b>Front Frame</b>            | Transparent PMMA + laser dotting on white colored background |
| <b>Light Source</b>           | Led RGB WS28 12b   |
| <b>Connectivity</b>           | WiFi, BLE, LAN 10/100  |
| <b>Wi-Fi Protocol</b>         | 802.11 b/g/n/d/e/l/k/r                                       |
| <b>Wi-Fi Standard</b>         | FCC/CE/TELEC/KCC   |
| <b>Wi-Fi Frequency range</b>  | 2.4GHz - 2.5GHz  |
| <b>Operating Temperature</b>  | -10°C - +50°C  |
| <b>Security</b>               | IP20   |
| <b>Size</b>                   | 180x180x45mm   |
| <b>Warranty</b>               | 1 year   |
| <b>Certifications</b>         | CE , RoHS  |

