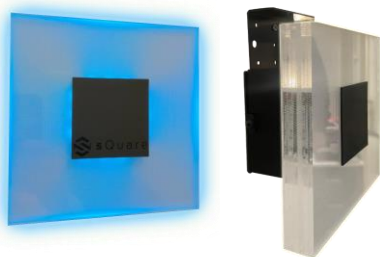


IoT Infrastructure

sSquare Rugged

Wi-Fi/BLE Gateway and Wi-Fi Mesh Node



The sSquare Rugged is a wall-mounted device and features an elegant 18cm square design. It is equipped with dual RGB LED strips for notifications and interactions with people around it. Designed to function as both a visual user interface and IoT Hub, it can provide environmental information to nearby users as well as a central monitoring system.

The sSquare Rugged operates as a Wi-Fi/BLE gateway, receiving BLE data from sensors and publishing MQTT messages. Specifically engineered for use in harsh environments, it is available with an IP44 or IP65-rated shell.

Product Features

Product Features	
Product Code	50.100004.026
User interface	2x12 dots Led strips WS2812B PMMA transparent laser dotting panel
Power Supply	AC-DC 100-277V
Power consumption	4W
Connectivity	WiFi, BLE
Internal memory (gateway)	4MB
Wi-Fi Protocol	802.11 b/g/d/e/l/k/r
Wi-Fi Standard	FCC/CE/TELEC/KCC
IoT BLE	Bluetooth v4.2 and Bluetooth LE specific
IoT BLE antenna gain	2-9 dBi
Wi-Fi Security	Open, WEP, WPA, WPA2
Supported Protocols	IP, TCP, UDP, ARP, ICMP, HTTP, DHCP
Operating Temperature	-10°C / +50°C
Protection	IP44 IP65
Size and weight	180x180x60 mm
Warranty	1 year
Certifications	CE, FCC, IC * all pending*